

LCD-H11

Loop Powered Heavy-duty LCD Field Indicator



LCD-H11



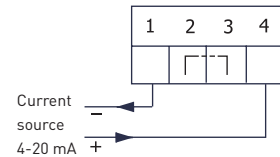
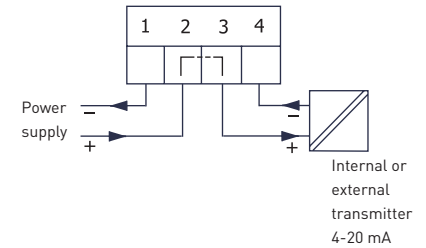
LCD-H11 is a digital, heavy-duty LCD indicator for installation directly in a 4-20 mA loop without need for external power. LCD-H11 is designed for field mounting and has a rugged, splash proof housing. The scale is easily programmable, without reference signal, by two internal pushbuttons for any values between -1999 and 9999. A temperature transmitter can be integrated for direct sensor input.

- Installation directly in a 4-20 mA loop without need for power supply
- Only 1.5 V voltage drop
- High-contrast, 4-digit LCD display
- Simple pushbutton scaling without reference signal
- Any range between -1999 to 9999 for 4 to 20 mA input
- Labels for different engineering units are included
- Typical accuracy of 0.05 % allows for high precision read-outs
- HART transparent
- Choice of transmitter can be integrated as added option
- Designed for ambient temperatures between -25 to +70 °C / -13 to +158 °F
- Field mounting in rugged IP66 / NEMA 4 housing

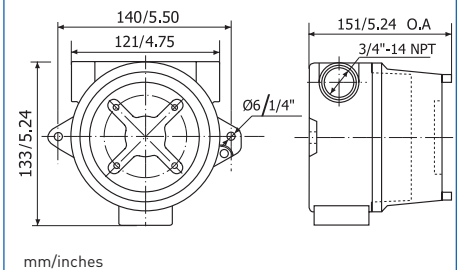
Specifications:

| | |
|-------------------------------|--|
| Input Current | 4-20 mA |
| Maximum current | 30 mA |
| Minimum current for operation | -3.5 mA |
| Voltage drop | ~1.5 V |
| Indication | |
| Display | Black LCD with 4 digits including minus sign |
| Digit height | 12.7 mm / 0.5" |
| Indication range | Any range between -1999 to 9999 |
| Decimals | Selectable, 0 to 3 |
| Under range / Over range | Flashing symbols LO/HI |
| Engineering units | Set of labels included (including blanks) |
| Response time | Appr. 0.5 s |
| Scale setting | Two pushbuttons inside the housing |
| Operation temperature | -25 to +70 °C / -13 to +158 °F |
| Typical accuracy | ±0.05 % FS ±1 digit |
| Protection | IP66 / NEMA 4 |
| Connections | Stranded, ≤ 1.5 mm ² AWG 16 |
| Conduit threads | 2 x 3/4" NPT |
| Mounting | Wall mounting |

Connections



Dimensions



Ordering information

| | |
|-------------------------|------------|
| LCD-H11 | 70LCDH1111 |
| Configuration | 70CAL00001 |
| Mounting of transmitter | 60VERMONT1 |

For indicator only (without housing), contact Inor